

VIVANTA | KATHMANDU





IN & AROUND KATHMANDU



Cultural destination, adventure paradise, business hub, Kathmandu, Nepal's capital has it all

- Explore 7 UNESCO World Heritage sites and the many other temples or take a walk on the wild side with nature trails and adventure sports
- Dive into the local culture and shop for traditional arts and crafts in the markets
- Explore more than 240 peaks in the majestic Himalayas over 20,000 ft. (6,096 mts.) above sea level, located in Nepal with Kathmandu as the starting point





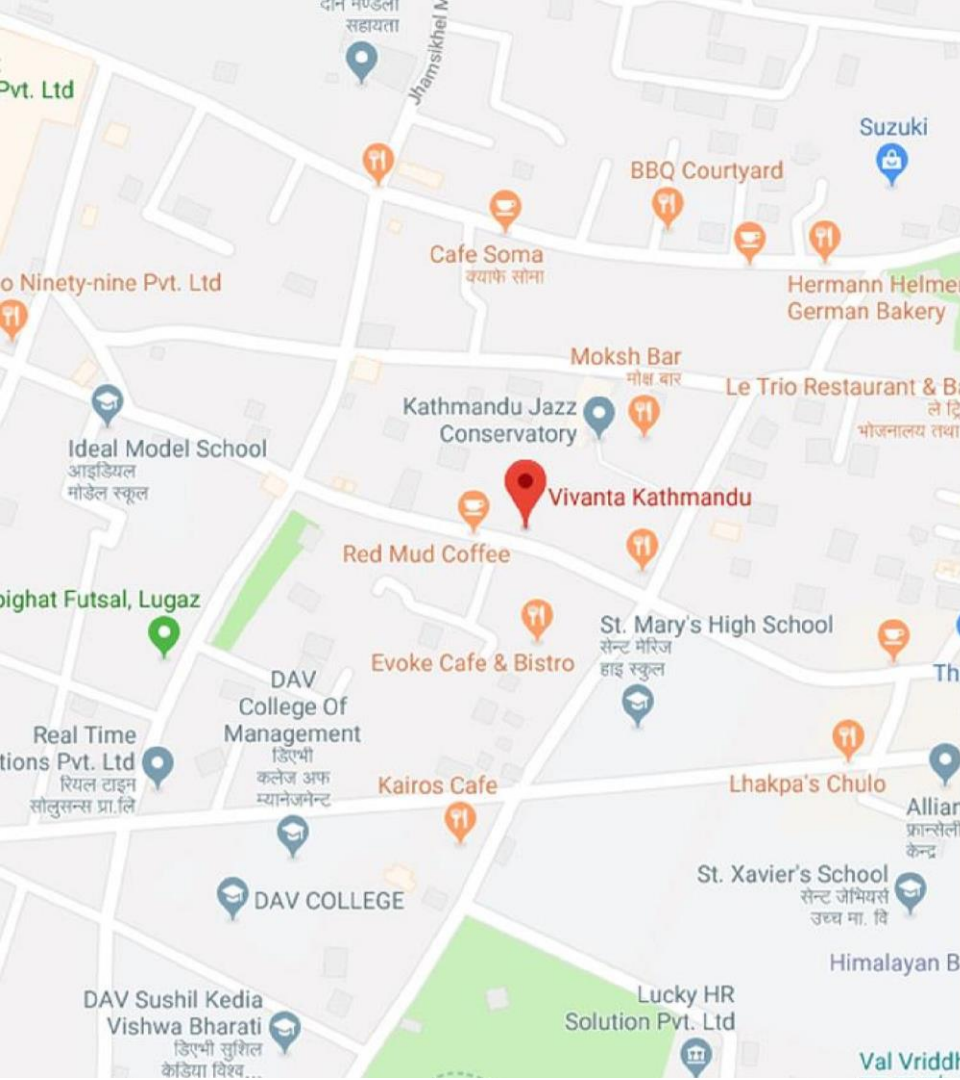
- Kathmandu Valley has an elevation ranging from 1,200mt. to 2,300mt. above sea level
- Kathmandu is situated in the bowl-shaped Kathmandu Valley and surrounded by four major Himalayan mountains: *Nagarjun, Phulchoki, Shivapuri and Chandragiri*
- Summers last for 3 months but are still quite pleasant
- Winters are much colder with temperatures ranging from 1°C to 20°C
- The monsoon hits Kathmandu in June and lasts for 3 months



CONNECTIVITY

By Air: Tribhuvan International Airport is situated about 7.8 kms from Vivanta Kathmandu and serves major International and interstate flights. Kathmandu is directly connected from India via New Delhi, Mumbai, Kolkata, Varanasi and International cities of Colombo Doha, Dubai, Sharjah, Lhasa, Doha, Guangzhou, Kuala Lumpur, Paro, DMK, Muscat, Kunming, Seoul, Bangkok, Abu Dhabi, Singapore and Hong Kong.

By Rail: Gorakhpur is the closest railway station to Kathmandu from India



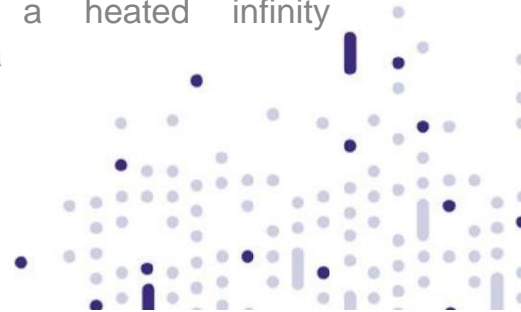


OVERVIEW



Vivanta Kathmandu is a contemporary hotel that offers business and leisure travellers a world-class experience in the most buzzing precinct in the valley, near the Patan Durbar Square: a marvel of Newari architecture and a UNESCO World Heritage Site.

Fresh as the mountain breeze and buzzing with excitement, Vivanta Kathmandu is the perfect amalgamation of traditional Nepali hospitality and contemporary Vivanta charm with 110 swank rooms, avant-garde restaurants with breath-taking views and fitness centre with a heated infinity swimming pool and spa



ROOMS

Vivanta Kathmandu offers 110 bright, spacious and comfortable rooms to its guests

Room Category	Total Inventory
Superior	14
Deluxe	59
Premium	36
Executive Suite	1



ROOM FEATURES

Sophisticated, luxurious, spacious and well-appointed rooms give you a warm welcome. Replete with a mini bar, upholstered headboard walls, floor rugs, rain shower and a 43 inch LCD television, the rooms also offer great views of the city





SUPERIOR ROOM

Ideal for a solo traveller or a small family. Enjoy impeccable round-the-clock service as you settle into this elegant space





DELUXE ROOMS

Revel in pleasing city views along with modern amenities in a stylish and expertly optimised space





PREMIUM ROOMS

Experience a ceiling-to-floor curtained glass wall that offers panoramic views of Kathmandu with the Himalayas looming majestically in the distance





EXECUTIVE SUITE

Top-of-the-line offering for guests seeking sophistication and refinement. The suite has a living area and a luxurious bathroom which is stocked with premium amenities, linen and soft robes



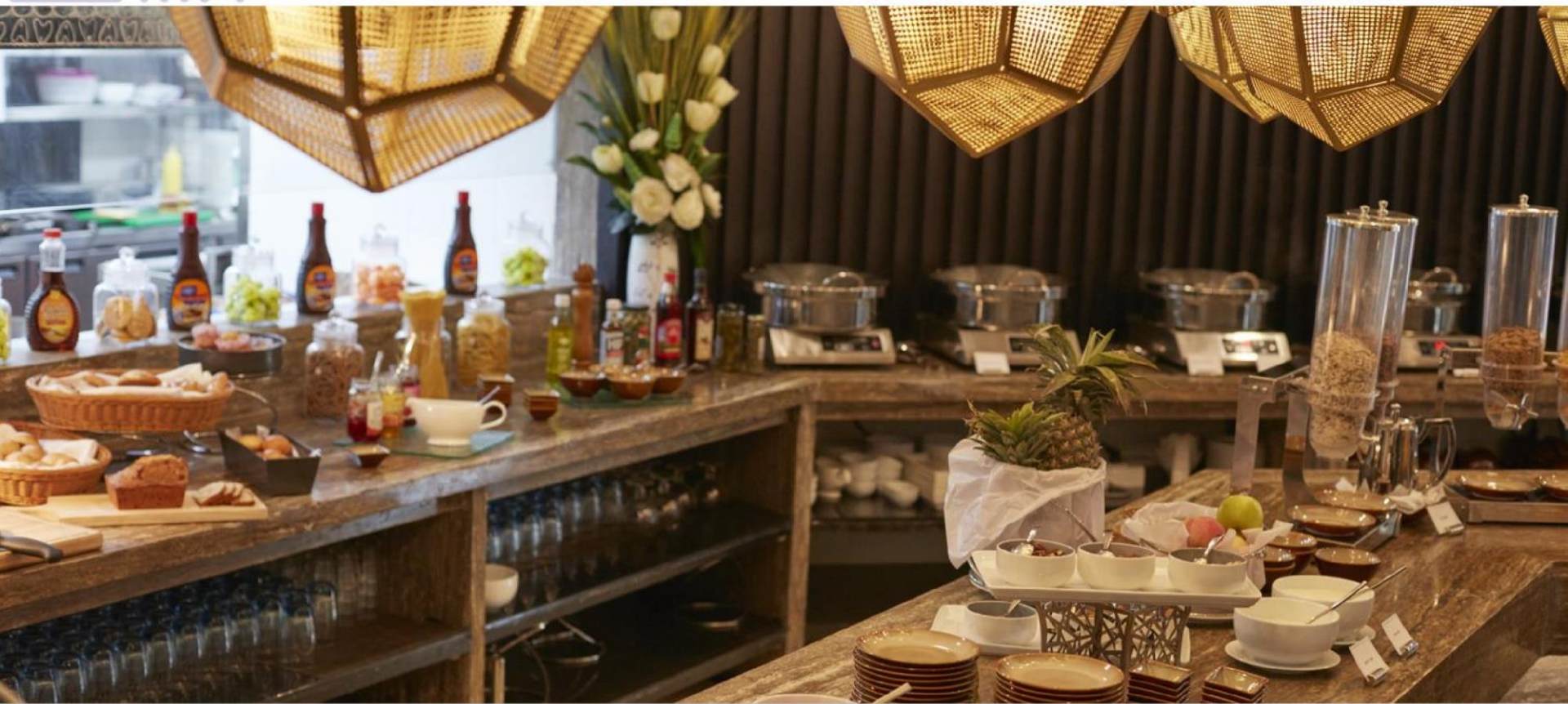
The background is a solid dark purple color. It is decorated with numerous abstract geometric shapes in various shades of purple and blue. These shapes include long, thin rectangles, some of which are slightly tilted, and small circles. The shapes are scattered across the entire page, creating a dynamic and textured effect.

DINING



Concept	All Day Dining
Cuisine	Indian and Continental
Timings	7:00am – 10:30pm
Ambiance	Elegant décor with glass walls that separate the restaurant from a wraparound al fresco area which hosts fun events
Specialty	Serves a diverse menu of comfort food and Indian delectable favourites







AKARI

Concept	Specialty Restaurant and Bar
Cuisine	Japanese and Asian
Timings	12:00pm – 10:30pm
Ambiance	The restaurant's minimalist design aesthetic borrows from Oriental manga culture
Specialty	The freshest sushi. Soulful bowlfuls including fragrant Thai curries. The most stunning valley views. And a central bar that's always buzzing.





KŌKŌ

Concept	Roof-top Bar and Lounge
Cuisine	Concocting inventive, delightfully-named cocktails and mocktails that rival the best in the world
Timings	12:00pm – 10:30pm
Ambiance	Eclectic street art on the walls that injects humour and makes for an electric, upmarket space to party in
Specialty	Hand-picked international vodkas, single malts, whiskeys and wines paired with bar food





KOKO, ROOFTOP BAR

The background is a solid dark blue-purple color. It is decorated with numerous abstract geometric shapes in lighter shades of purple and blue. These shapes include long, thin rectangles of varying lengths and orientations, as well as small circles and dots. The shapes are scattered across the entire frame, creating a dynamic and textured effect.

MEETINGS



MEETINGS & CONFERENCES

Our well-equipped business rooms take those boardroom meetings to new heights. There are 2 meeting rooms which have a capacity of 75 and 50 guests respectively





SPA & FITNESS



THE SPA

Spread across a generous 111 sq.m., The Spa is a crucible of comforting therapies. Rejuvenate yourself with our professional masseuse, steam and sauna while admiring picture-postcard views of snow-capped peaks shimmering in the distance







ROOFTOP HEATED INFINITY POOL

The background is a solid dark purple color. It is decorated with numerous abstract geometric shapes in various shades of purple and blue. These shapes include long, thin rectangles, some of which are slightly tilted, and small circles. The shapes are scattered across the entire frame, creating a dynamic and textured effect.

EXPERIENCES



SUNDOWNERS AT KOKO

Let your spirits soar as the sun goes down every evening. Hit Kathmandu's newest and most stylish bar: Koko. We also have some sensational small plates to keep you company



SATURDAY BRUNCH AT AKARI & KOKO

Spread the weekend cheer every Saturday at Akari and Koko with a brunch accompanied by sparkling wine and a magnificent spread





A TASTE OF NEWAR

Meet and greet the people of Newar, and get a taste of their rich culture and cuisine. The Newar food tour is a one-of-a-kind experience, where you get to visit a Newar home in the city





YOGA BY THE POOL

As a curtain of steam rises from our terrace-top, heated infinity pool, find your inner calm. Start your day with yoga by the pool and let the warmth of the rising sun wash over you





EXPLORE KATHMANDU

Our concierge desk customizes city tours to suit your preferences and interests. From visiting the seven UNESCO World Heritage sites, to wandering into the Garden of Dreams, the city has a lot to offer the avid traveller





CALL OF THE WILD

Explore the wild side; embark on a trip to Chitwan National Park where you might sight One Horned Rhinoceroses, Royal Bengal Tigers and the Gharial. An overnight stay at the swish Taj Meghauri Serai lodge lets you get in touch with the wild side including a breakfast overlooking bathing elephants in the Rapti River.





WALK THE 'ROOF OF THE WORLD'

Take off on a day-long hike to explore the unsullied beauty of Shivapuri Nagarjun National Park. We also pack a sumptuous lunch that you can enjoy in the lap of nature.



Contact :

Jhamsikhel-03, Lalitpur, Nepal

T +977 1 5525002 | 1800 111825

E : sales.vivantaktm@tajhotels.com

W : vivantakathmandu.com

THANK YOU