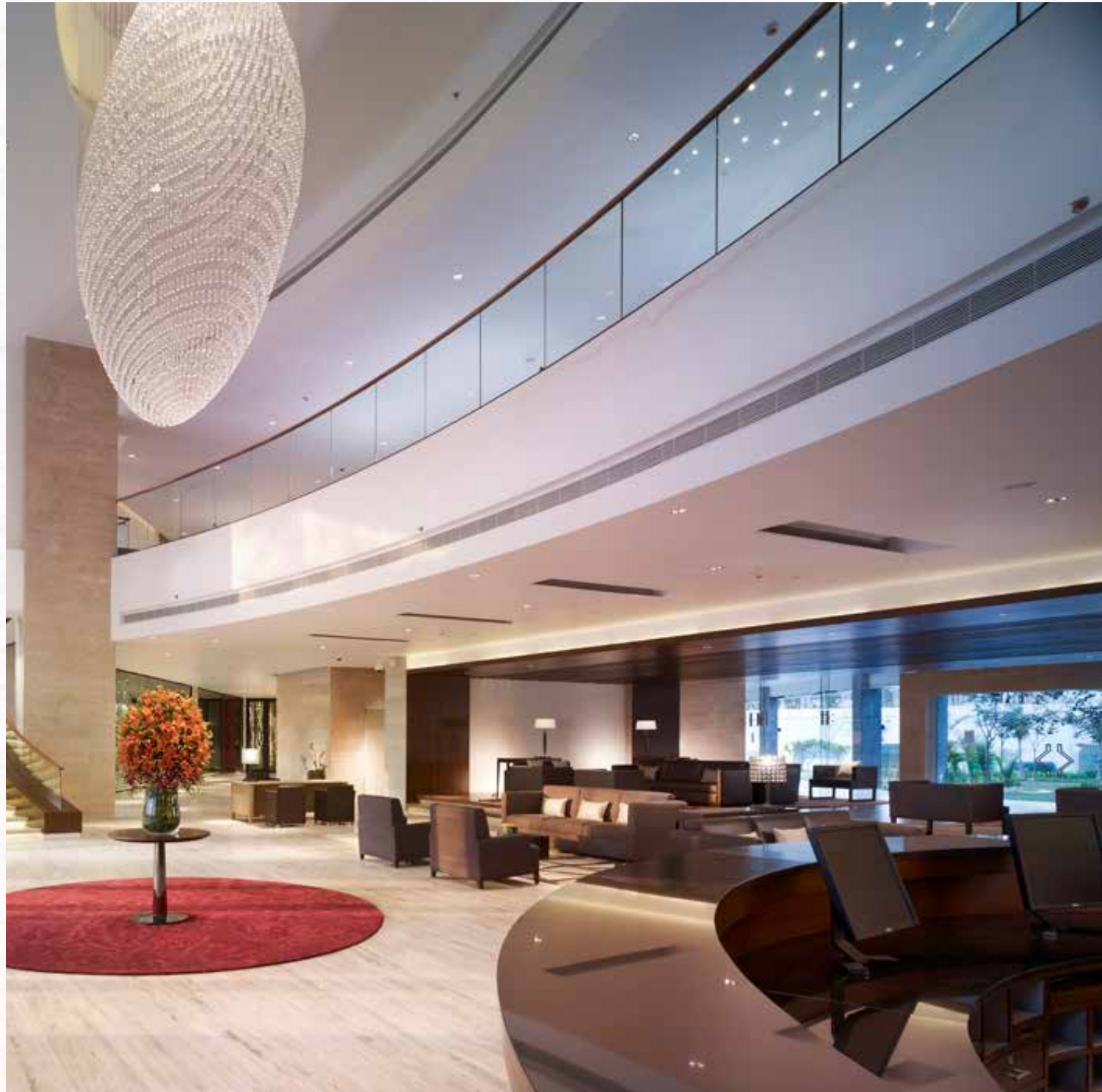




YESHWANTPUR
BENGALURU

WHERE TIMELESS EXPERIENCES MEET UNMATCHED HOSPITALITY.



INTRODUCTION

The Taj Yeshwantpur, Bengaluru complements the city's appetite for success with a vibrant unison of intelligent work environment, luxurious spaces, and intuitive services. 327 well-appointed rooms and luxury suites at our 5-star hotel in Bengaluru take every measure to ensure that no requirement is unmet. Whether it's the show-stopping lobby or the striking stairway swirling around the chic chandelier that welcomes you, every inch distinctly reflects the Taj and what it stands for. Location-wise, this 5-star luxury hotel is 35 minutes by road from the international airport, minutes away from Yeshwantpur Railway Terminus, and a few steps away from the metro terminus. The strategic location of the hotel, about 8 km away from the city's premium convention centre, BIEC, and 2.8 km away from the corporate headquarters, World Trade Centre gives the discerning business travellers a great advantage. Other facilities include 18,000 square feet of conference and event venues including the splendid courtyard around the majestic banyan tree, multi-cuisine dining options, signature experiences, the renowned J Wellness Circle, and the chic niu&nau Salon.



DINING

PALETTE

Palette, the all-day dining outlet, offers an eclectic mix of oriental, continental, and Indian selections and a view of the inner courtyard. A deli, an interesting stretch of live stations, a satellite cold buffet, dramatic interiors, and lighting with a custom-made ceiling design make for casual dining in a contemporary setting.

PARANDA

Paranda features a stylised rustic setting with a spice box entrance, brick inlays, theatre kitchen, and vibrant colours and serves specialties from the land of five rivers – Punjab.



SHIMMER

Shimmer is a high-energy bar that accentuates the fashion theme. The bar is poised to be an ode to the cosmopolitan character of Bengaluru and promises to be the city's social network destination with high-octane entertainment.





ACCOMMODATION

SUPERIOR ROOMS (36 SQ. M)

The spacious Superior Rooms offer city and pool views and are furnished with queen/twin beds, as well as an intelligent workstation with in-built power and data ports.

DELUXE ROOMS (36 SQ. M)

The well-appointed Deluxe Rooms have king beds and are adorned with textured art and elegant Indian motifs. You are treated to views of the city or the pool.

PREMIUM ROOMS (36 SQ. M)

You can also choose between the large and stylishly-appointed king-bedded Premium Rooms, which are located on the 9th and 11th floors to offer delightful views.



EXECUTIVE SUITES (62 SQ. M)

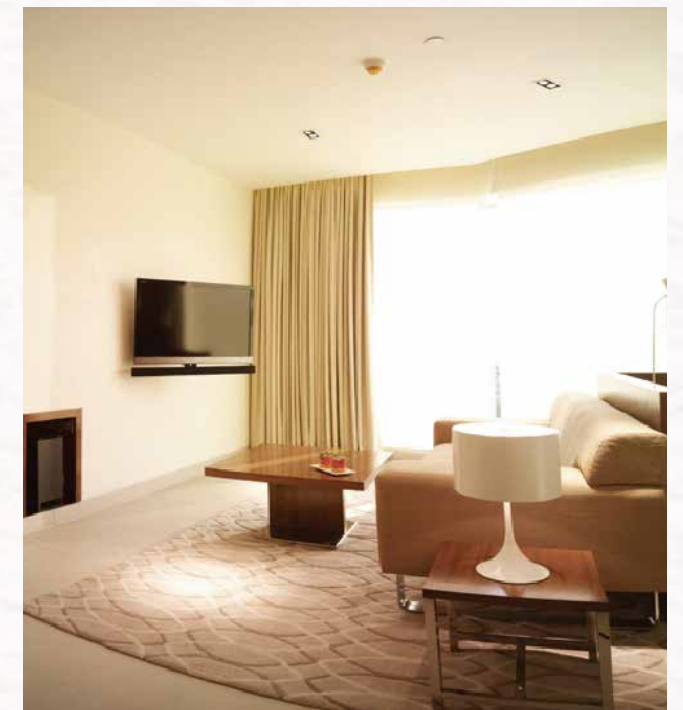
Executive Suites are elegant and well-appointed mix of bay and angular suites, overlooking the city. With a warm and residential feel, these luxury rooms are strictly for those who like to indulge in that little extra.

LUXURY SUITE (71 SQ. M)

Indulge in a leisurely meal and a stimulating conversation in the living room of the Luxury Suite. Set amidst 2 bays overlooking the city, the suites ensure that your stay is nothing short of a magical experience!

PRESIDENTIAL SUITE (168 SQ. M)

Perched on the 11th floor, overlooking the famous ISKCON temple grounds, the 2-bedroom, Presidential Suite is indisputably one of the finest luxury suites, spread across a large area. The Presidential Suite has an expansive living room, plush dining room with a 12-seat table, and well-equipped pantry, study, lavish master bedroom, and guest bedroom with grand en-suite bathrooms.



MEET & CELEBRATE

AURA

Spread across 749 sq. m, the majestic ballroom with mood lighting and a variety of seating options can be conveniently partitioned into three soundproof sections to host smaller engagements. The Aura has a vast pre-function area to tastefully lay the buffets and further opens up into a large courtyard area, which hosts the beautiful banyan tree. This courtyard is considered to be an auspicious venue for weddings and other social events. Aura has witnessed esteemed exhibitions, well-reputed delegations, and annual meets.

STRATEGY

Strategy with its state-of-the-art décor and tastefully-designed pre-function area is designed for corporate meetings and events. Partitionable into smaller venues, this venue offers flexibility to conduct breakout meetings.

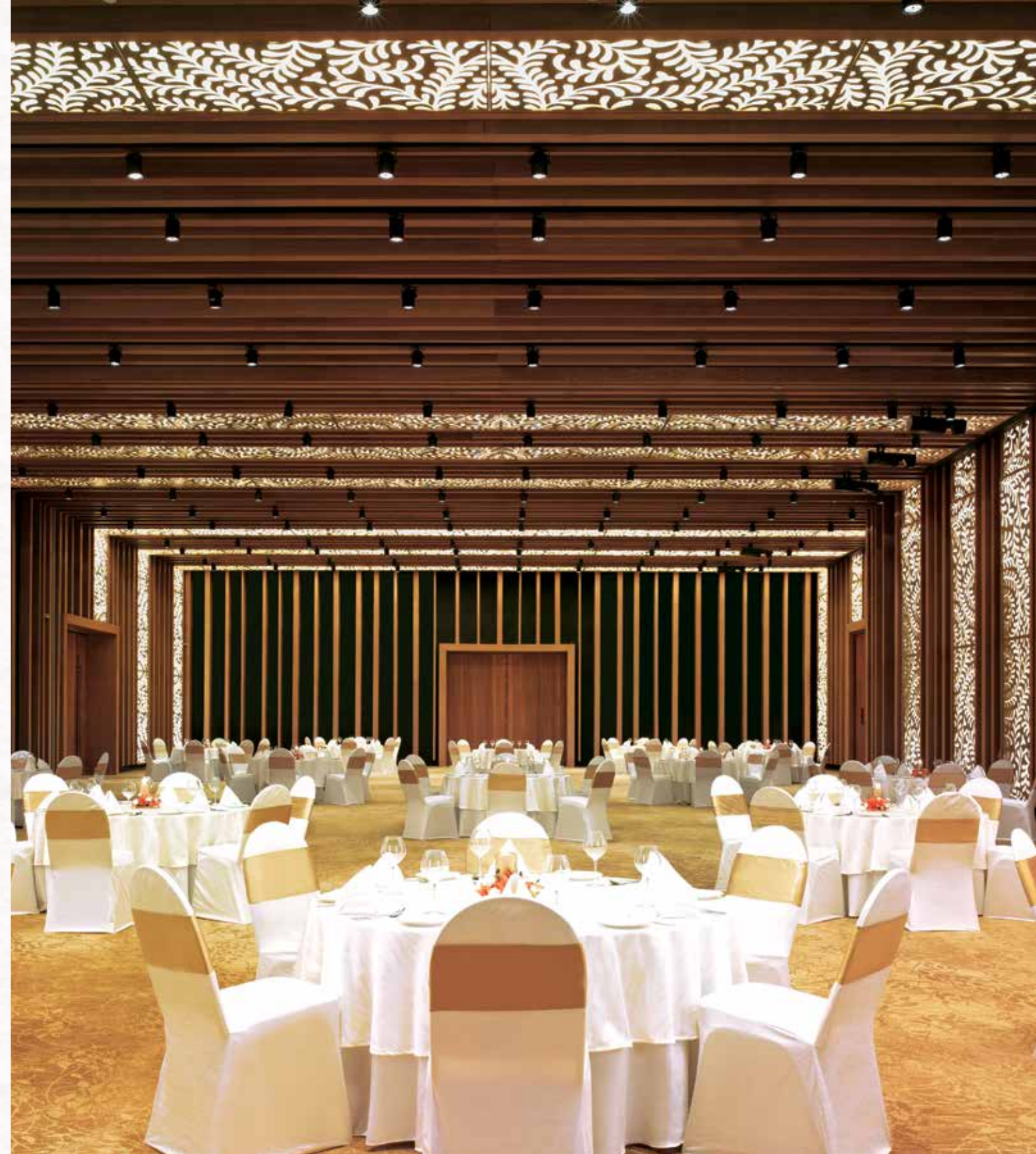


HARMONY

Harmony is a smart venue with ample natural lighting and easy access to a beautiful alfresco area with courtyard view. This elegant 204 sq. m venue will take your cocktail party to a new level.

AGENDA BOARDROOM

This well-appointed hall hosts a contemporary boardroom set-up with full-fledged infrastructure to accommodate board meetings for up to 20 guests.



MEET AND CELEBRATE

Meet & Celebrate	Venue Capacities					Venue Size	Venue Dimensions
	Cocktail	Theatre	Cluster	Classroom	U-shape	Sq. Feet Sq. Meters	Length x Width x Height (Ft) Length x Width x Height (M)
Aura (Lobby Level)	1200	800	450	240		8100 750	130 x 62 x 20 40 x 19 x 6
Aura 1	225	200	80	60	50	2700 250	43 x 62 x 20 4 x 19 x 6
Aura 2	275	250	90	70	50	3200 300	52 x 62 x 20 5 x 19 x 6
Aura 3	200	175	70	50	40	2200 300	35 x 62 x 20 3 x 19 x 6
Aura Pre-function Area						3200 300	142 x 22 x 12 43 x 7 x 3
Strategy (Level 1)	300	250	150	125	80	3400 325	106 x 32 x 12 32 x 10 x 3
Strategy 1	175	150	60	40	30	1800 125	57 x 32 x 12 5 x 10 x 3
Strategy 2	125	100	50	30	30	1600 150	49 x 32 x 12 4 x 10 x 3
Harmony (Level 1)	150	120	60	40	30	2200 200	55 x 40 x 10 17 x 12 x 3
Agenda (Level 1)					20	720 70	30 x 24 x 11 9 x 7 x 3
Oval 1 (Level 1)					12	280 25	20 x 14 x 10 6 x 4 x 3
Oval 2 (Level 1)					12	280 25	20 x 14 x 10 6 x 4 x 3

EXPERIENCES

J WELLNESS CIRCLE

Blending ancient Indian wisdom with contemporary therapies, J Wellness Circle offers the best in Indian rejuvenation therapies ranging from Indian aromatherapy massages, time-honoured Indian treatments, body scrubs, wraps, facials, and salon services. J Wellness Circle also promises a retreat for seekers of yoga and meditation, where dedicated therapists combine timeless wellness concepts with modern therapeutic wisdom, to set a new benchmark in holistic treatments and therapies. We have three treatment rooms, including one couple treatment room.



NIU&NAU

niu&nau is a new age salon concept, crafted for the mindful generation. Here, you will discover a re-imagined salon experience with a niche sense of style. niu&nau brings a full regimen of services spanning hair, beauty, and skin care.






TAJ
YESHWANTPUR
BENGALURU

TAJ YESHWANTPUR, 2275, TUMKUR ROAD, YESHWANTPUR, BENGALURU, KARNATAKA - 560 022. INDIA
T: +91 80-6690 0111 | YESHWANTPUR.BENGALURU@TAJHOTELS.COM | WWW.TAJHOTELS.COM